



GMT

594 Maplehurst Avenue
Oakville

Welcome to 594 Maplehurst Avenue

Set on a well-loved street in established West Oakville, this inviting custom family home blends contemporary refinement with everyday comfort. Ideally positioned, the west-facing rear lot is thoughtfully curated with intentional hardscaping, mixed evergreens + topiary. Front-facing, mature cedars + flat stone pavers lead to a peaked portico + stately entry, opening to a refined, cohesive interior with soaring ceilings + expansive glazing. This is a sophisticated home in a prime location.

THE GOODALE MILLER TEAM

Listing Agents: Brad Miller, Kieran McCourt & Murray McKeage



Property Highlights

BEDS	4+1
BATHS	4.1
LOT SIZE	123.21' x 61.92' x 123.21' x 61.92'
ABOVE GRADE	3,497 sq ft
TOTAL SQ FT	5,639 sq ft
TAXES	\$14,164 / 2025





Main Level

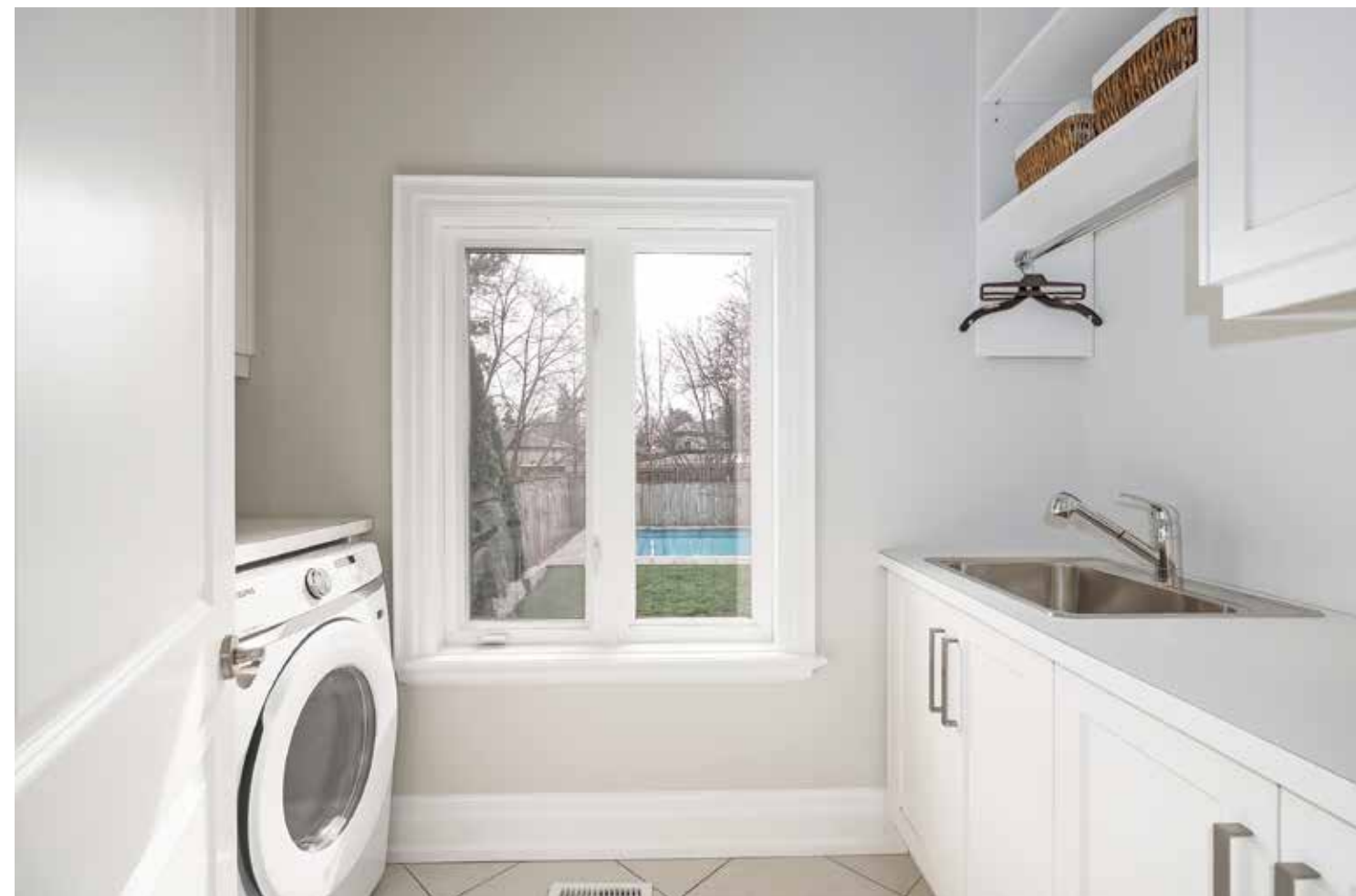
Expansive glazing + vaulted ceilings define bright, airy principal spaces. Detailed millwork frames each opening, while warm oak hardwood + neutral marble tile flow throughout. The living room is anchored by a Palladium window with garden views; the dining room offers coffered ceilings with two-step crown + ample space for formal gatherings. A well-placed servery connects to the kitchen—refined + functional for everyday living or hosting. The family room features wall-to-wall custom cabinetry + a central fireplace, while the breakfast area features glass doors to the rear portico, a serene spot to overlook the pool. A thoughtfully designed utility wing completes the level with mudroom, laundry + garage access.











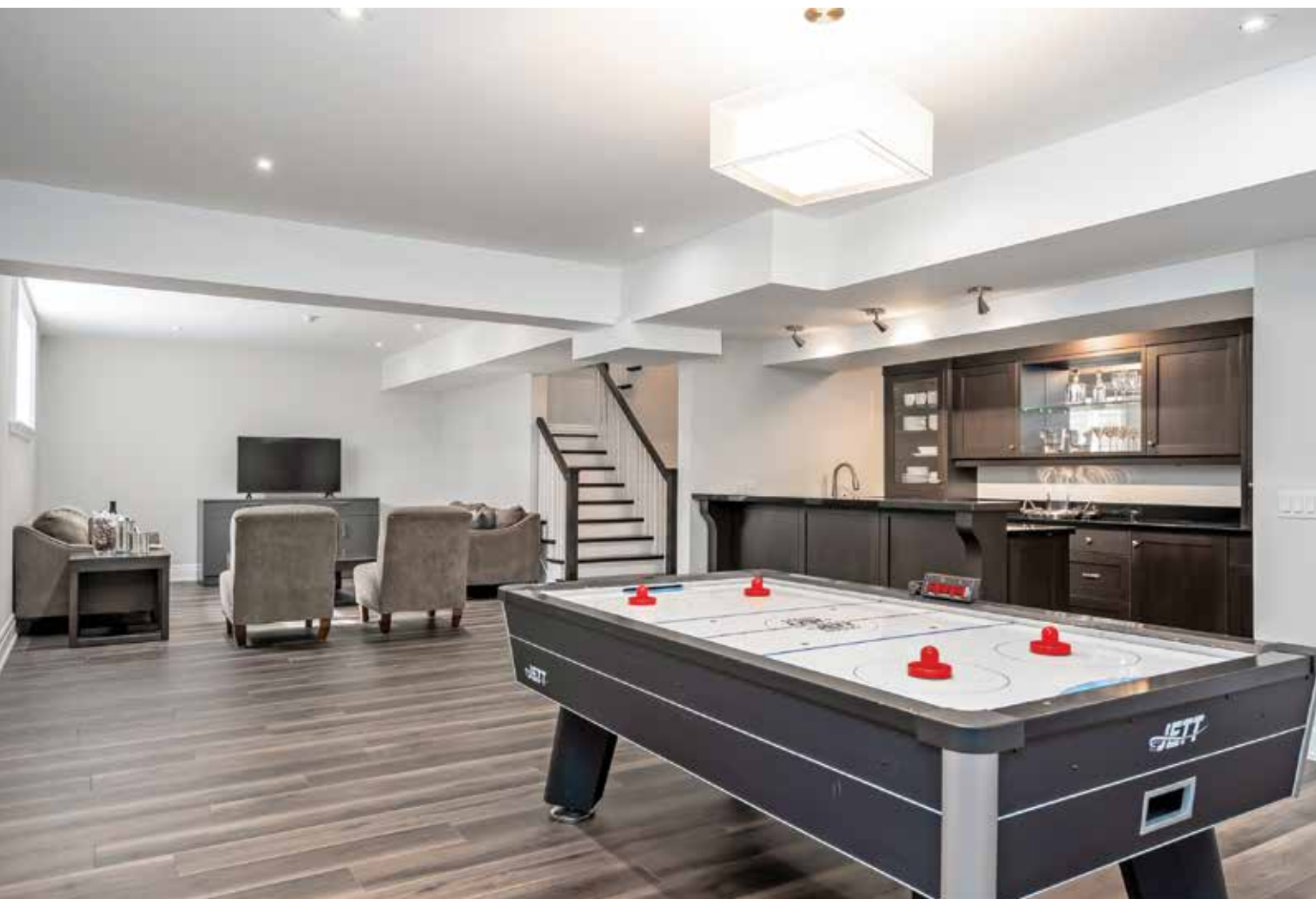


Second Level

The primary retreat impresses with vaulted ceiling, glass doors that open to glass framed terrace, walk-in with built-in system and a dreamy spa bath with glass shower + deep soaker tub. It's a refuge you long for after a long day. An additional three generously sized bedrooms feature vaulted ceilings, expansive glazing + ample storage. One offers an ensuite + two share a well-appointed + lavish main bath.

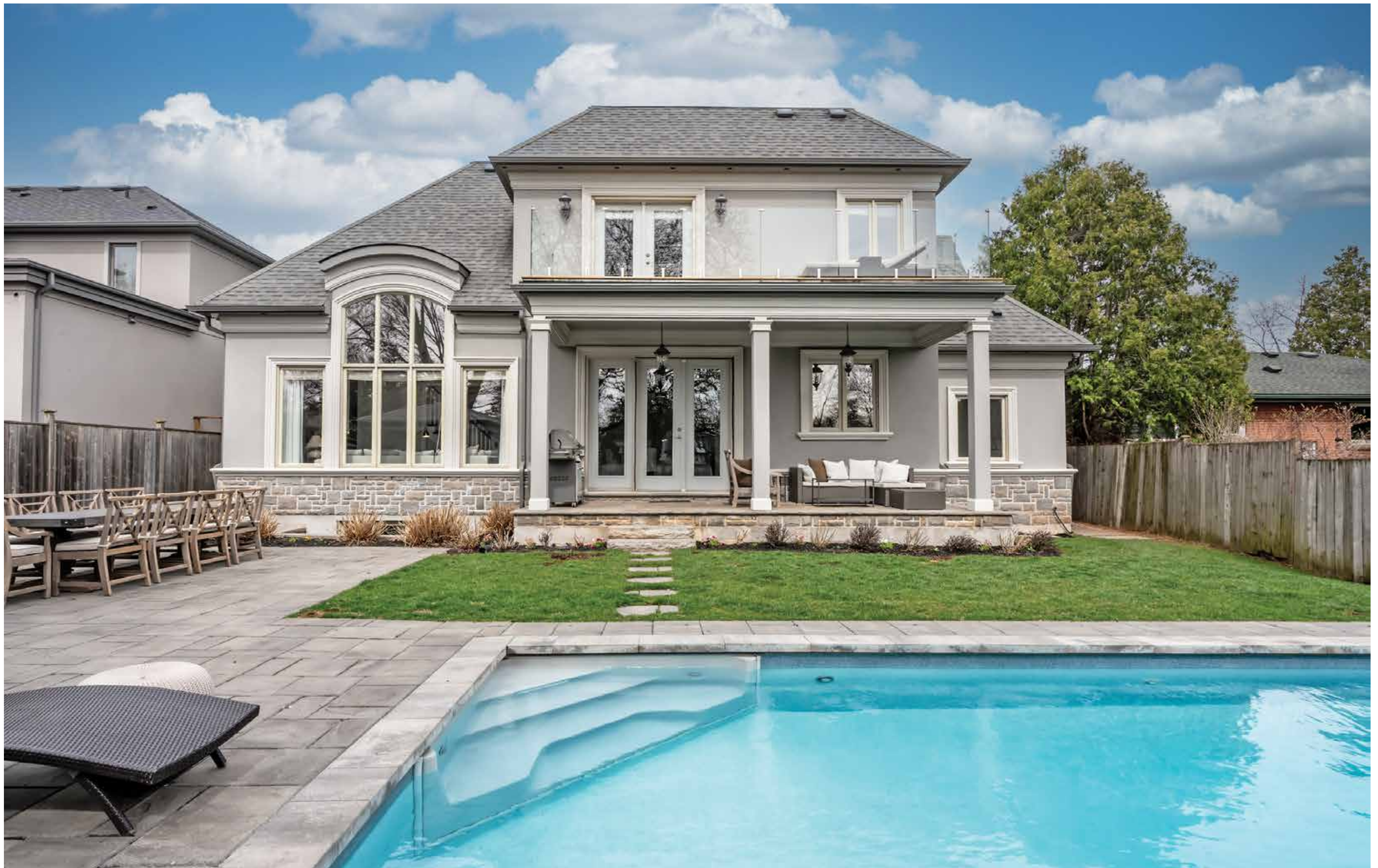






Lower Level

Strategically designed, the lower level is an extension of the refined living spaces on the upper levels. A generous level with egress windows throughout keeping it bright. The rec room is an ideal family gathering space; open to the games space and fully-outfitted wet bar - making entertaining a breeze. Gym, flex space, storage, guest bedroom and full bath complete this level.

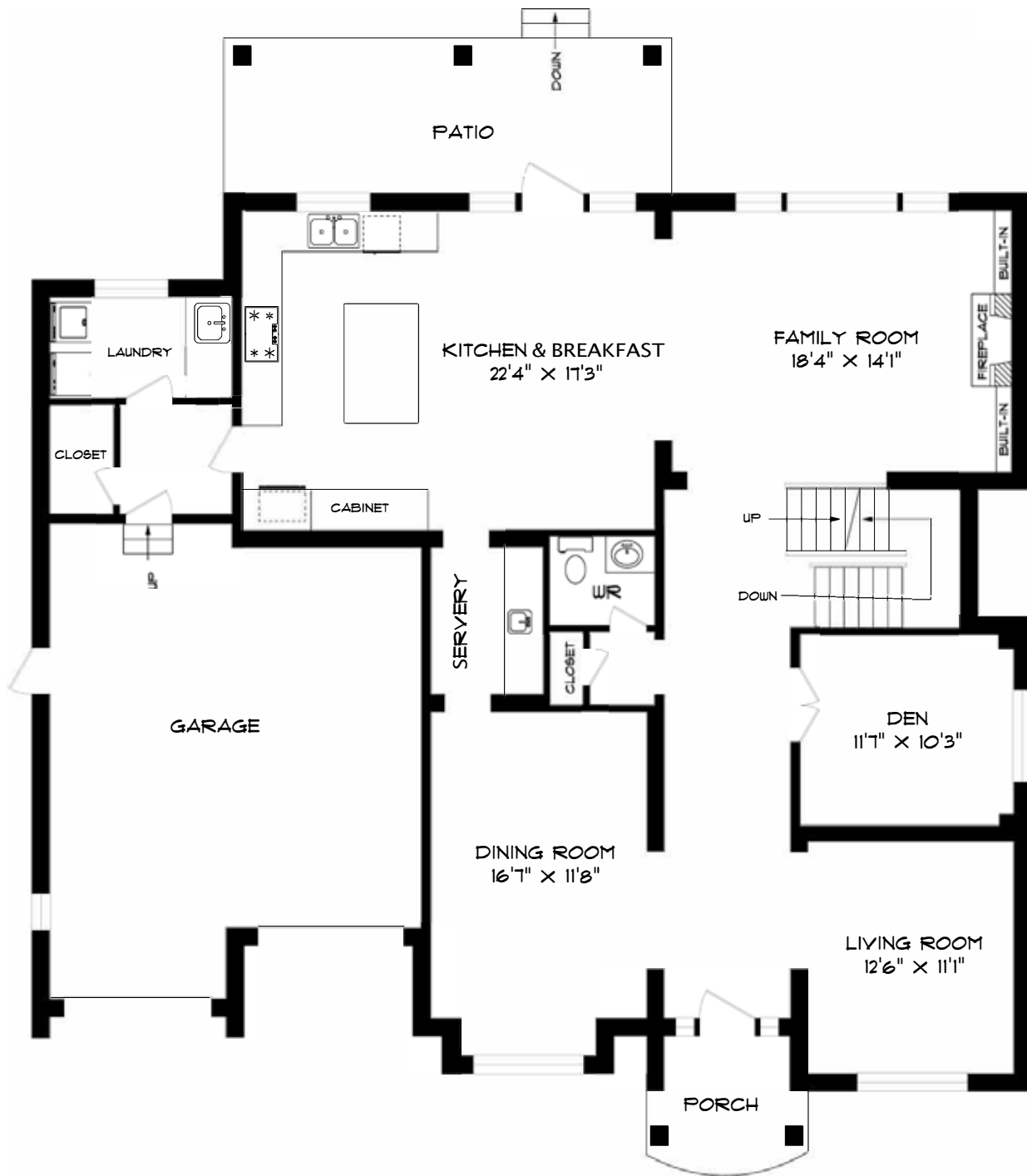




Backyard

Thoughtfully designed for both relaxed living + effortless entertaining, the rear yard unfolds across a series of stone patios that define each outdoor moment. A dedicated dining area sits alongside a built-in bar, creating a natural hub for hosting, while the covered portico extends the living space with a comfortable lounge overlooking the pool. Clean lines + soft landscaping frame the setting + pool anchors the yard. Above, the upper balcony adds a quiet vantage point from the primary, ideal for taking in the layered views below.

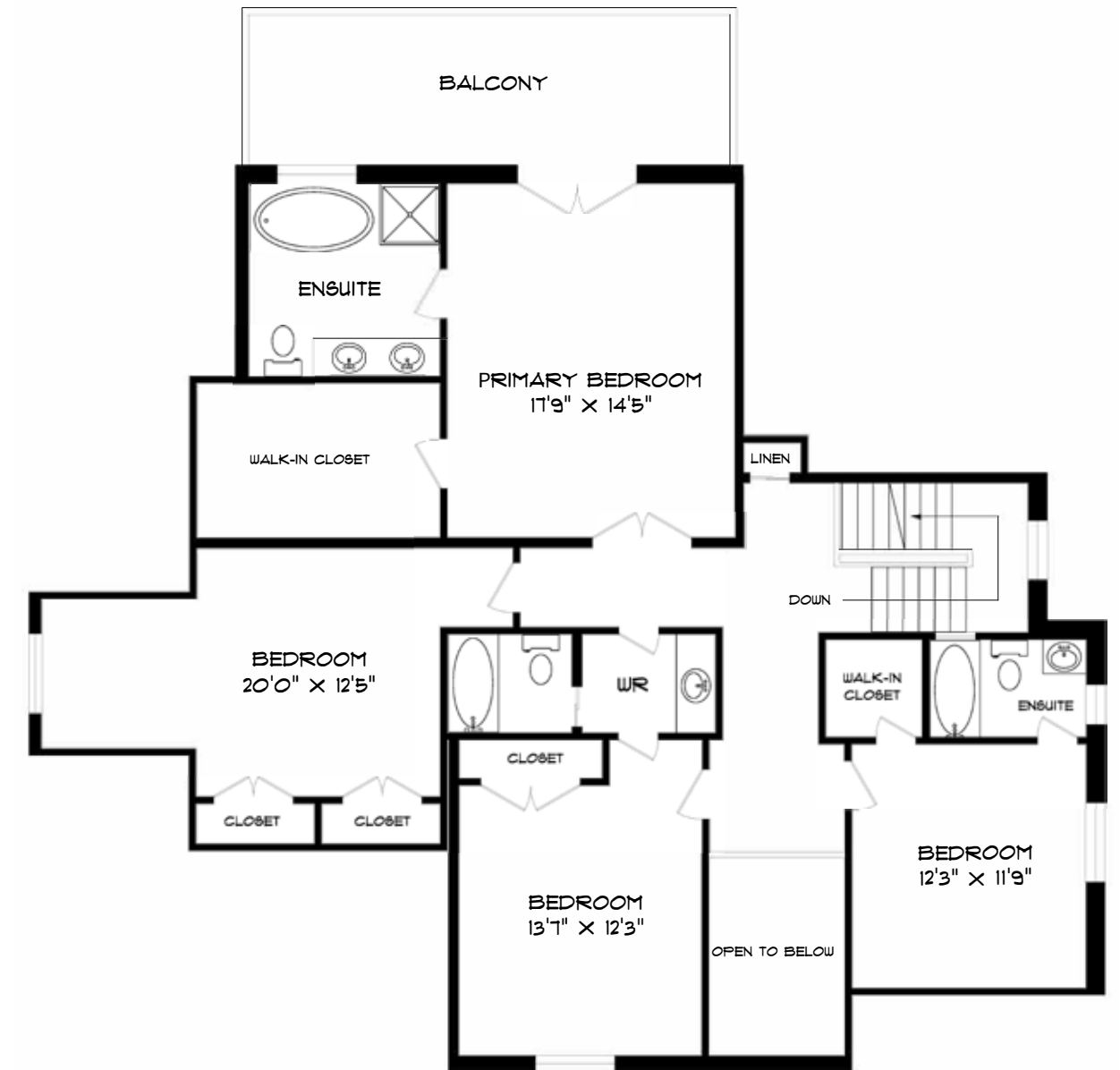
Main Level Floor Plan



**MAIN FLOOR
1900 SQUARE FEET**

*Room sizes should be considered approximate since measurements are subject to certification.

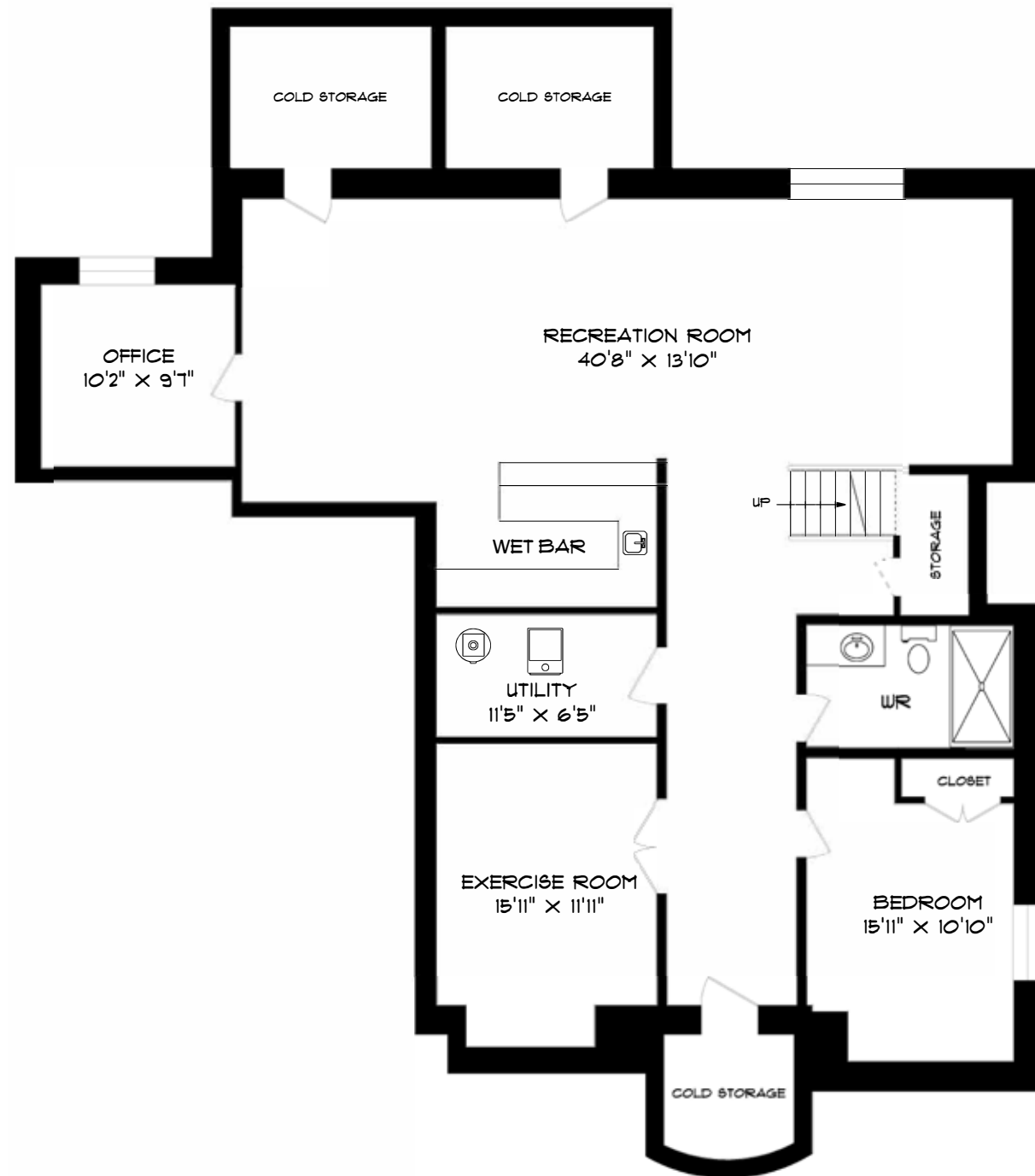
Second Level Floor Plan



**SECOND FLOOR
1597 SQUARE FEET**

*Room sizes should be considered approximate since measurements are subject to certification.

Lower Level Floor Plan



**LOWER LEVEL
2142 SQUARE FEET**

*Room sizes should be considered approximate since measurements are subject to certification.



About The Neighbourhood

West Oakville is a welcoming community that combines convenience, green space and a strong neighbourhood feel. Ideally located south of the QEW, it offers easy access to downtown Oakville, Bronte Village and Lake Ontario, along with popular destinations like the Oakville YMCA and Queen Elizabeth Park Community and Cultural Centre. Mature trees and generous green spaces add to its established charm, making it a place where residents feel both connected and at ease.

Life in West Oakville balances accessibility with a relaxed pace. Neighbours gather in local parks, weekends are spent exploring nearby shops and dining in Bronte, and families and professionals alike enjoy the short commute options. Neighbourhood gatherings at Queen Elizabeth Park Community and Cultural Centre or weekends spent exploring Bronte's waterfront trails add to its welcoming character.

Luxury Features

NOTABLE

- Expansive, pristine lot
- Masterfully landscaped
- Mature mixed tree canopy
- Perennial framing gardens
- Vaulted ceilings throughout
- 10' main, 9' upper + lower
- Extensive custom millwork
- Handcrafted Perola millwork throughout
- Front & rear irrigation
- Salt-water pool + pool house with bar

- MAIN LEVEL -

FOYER

- Stately entry door flanked by linear sidelite + arched transom
- Two-storey ceiling height
- Marble tile flooring
- Expanded traditional baseboards
- Coat closet with shelving + hanging storage
- Designer chandelier

LIVING ROOM

- Milled entrance
- Vaulted ceiling
- Expansive glazing with arched transom
- Warm stained oak hardwood flooring
- Expanded traditional baseboards
- Designer chandelier
- Pot lighting + wall sconces

DEN/OFFICE

- Double half glass entry doors
- Warm stained oak hardwood flooring
- Expanded traditional baseboards
- Expansive glazing
- Tray ceiling with crown moulding
- Central chandelier

POWDER ROOM

- Warm stained oak hardwood flooring
- Expanded traditional baseboards
- Warm wood vanity with granite top, undermount sink + chrome 3-piece faucet
- Wood framed mirror
- Central chandelier
- American Standard lavatory

DINING ROOM

- Milled entrance
- Coffered ceiling with two-step crown moulding
- Warm stained oak hardwood flooring
- Expanded traditional baseboards
- Expansive glazing
- Linear chandelier
- Pot lighting
- Built-in audio
- Access to servery

SERVERY

- Warm stained wood cabinetry
- Upper features with glass fronts
- Granite counters with stainless prep sink
- Valance lighting
- Connects to kitchen

KITCHEN + BREAKFAST

- Milled entrance
- Oversized neutral marble tile flooring
- Expanded traditional baseboards
- Abundance of full-height white two-step shaker cabinetry
- Deep drawers + closed storage
- Granite counters with linear glass tile back splash
- Utility wall with full-height pantry with organizational storage
- Recycling sorting station
- Central island in warm wood with storage, seating + stainless prep sink
- Central pendant lighting
- Perimeter counter with double stainless sink with chrome faucet
- Commercial grade appliances:
- Jenn-air 6-burner gas cooktop
- Custom hood with stainless inset vent
- Panelled Jenn-air dishwasher
- Panelled Jenn-air fridge/freezer
- Built-in stainless Panasonic microwave
- Built-in stainless Jenn-air oven
- Pot lighting
- Built-in audio
- Breakfast area with ample space for dining + custom hutch
- Full-glass French doors with side panel that open to rear patio
- Central chandelier
- Open to family room

FAMILY ROOM

- Milled entrance
- Expansive 14-foot vaulted ceiling
- Warm stained oak hardwood flooring
- Expanded traditional baseboards
- Full-wall glazing with arched uppers
- Feature wall with custom built-in cabinetry with central marble framed gas fireplace, upper media niche + open shelves with closed lowers
- Pot lighting

MUDROOM

- Interior garage access
- Marble tile flooring
- Expanded traditional baseboards
- Walk-in coat closet with built-ins
- Easy access to laundry
- Flush-mount lighting

LAUNDRY

- Marble tile flooring
- Expanded traditional baseboards
- Closed upper cabinetry with brushed chrome hardware
- White front-loading Samsung washer + dryer pair
- Folding counter + ample storage
- Flush-mount lighting

GARAGE

- Full-height double garage
- Interior access
- Exterior access from side door
- Automatic opener on doors

Luxury Features

- UPPER LEVEL -

- Warm oak stairs with white square spindles + stained rails
- Warm oak hardwood flooring
- Expanded traditional baseboards
- Linear skylight
- Drop chandelier
- Linen closet with pocket door + shelving

PRIMARY BEDROOM

- Vaulted ceiling
- Double door entrance
- Warm oak hardwood flooring
- Expanded traditional baseboards
- Expansive glazing
- Double French doors open to private balcony with glass rails
- Designer chandelier

PRIMARY DRESSING

- Warm oak hardwood flooring
- Built-in closet system with open + closed storage; drawers + hanging storage + dedicated shoe storage
- Two mixed textile chandeliers

PRIMARY ENSUITE

- Linear honed marble tile flooring
- Expanded traditional baseboards
- Double glazing
- Double wood vanity with closed storage + chrome hardware
- Marble counter + chrome faucets
- Wood framed wall-mounted mirror
- Two chrome sconces

- Expansive glass enclosed shower with hexagon micro tile floor + linear glass tile walls
- Chrome fixtures with body jets
- Free-standing soaker tub with mounted chrome fixtures
- American Standard lavatory
- Designer chandelier

BEDROOM 2

- Vaulted ceiling
- Warm oak hardwood flooring
- Expanded traditional baseboards
- Expansive glazing with arched transom
- Walk-in closet with shelf + hanging storage
- Designer chandelier

ENSUITE 2

- Linear porcelain tile flooring
- Expanded traditional baseboards
- Casement window
- Painted wood vanity with black granite top + chrome 3-piece faucet
- Wood framed mirror
- Soaker tub with linear porcelain tile surround + chrome fixtures
- Flushmount lighting
- American Standard lavatory

BEDROOM 3

- Vaulted ceiling
- Warm oak hardwood flooring
- Expanded traditional baseboards
- Expansive glazing with arched transom
- Double closet with shelf + hanging storage

Luxury Features

MAIN BATH

- Stone-effect porcelain tile flooring
- Expanded traditional baseboards
- White vanity with closed storage, marble counter, wood framed mirror
- Flushmount-lighting
- Separate room with lavatory + bath; deep soaker tub with tile surround

BEDROOM 4

- Vaulted ceiling
- Warm oak hardwood flooring
- Expanded traditional baseboards
- Glazing with arched transom + built-in bench
- Double closets with shelf + hanging storage
- Central chandelier

LOWER LEVEL

- Warm oak stairs with white square spindles + stained rails
- Luxury laminate flooring
- Expanded traditional baseboards
- Under stair storage
- Pot lighting
- Expansive windows

RECREATION ROOM

- Luxury laminate flooring
- Expanded traditional baseboards
- Triple egress window with stone window well
- Ample space for family gatherings
- Pot lighting

WET BAR

- Linear porcelain tile flooring
- Expanded baseboards
- Built-in cabinetry with closed storage + upper and lower cabinetry
- Glass-front feature cabinet + glass shelving
- Black quartz counter + backsplash
- Raised counter with bar seating
- Recycling sorting station
- GE beverage fridge
- Stainless sink with chrome faucet
- Feature track lighting

FLEX SPACE

- Luxury laminate flooring
- Expanded traditional baseboards
- Expansive glazing with stone window well
- Flushmount lighting

GYM

- Plush berber broadloom
- Expanded traditional baseboards
- Flushmount lighting + pot lighting

BATHROOM

- Textured tile flooring
- Expanded traditional baseboards
- Warm wood vanity with closed storage, black marbled top + single chrome fixture
- Framed mirror
- Glass shower with micro-tile floor + tile surround
- American Standard lavatory
- Pot lighting

BEDROOM 5

- Berber broadloom
- Expanded traditional baseboards
- Double closet
- Double egress window
- Pot lighting

STORAGE

- Three finished cold storage areas

MECHANICAL

- Extra storage area
- HE Lennox furnace with humidifier
- Rheem hot water heater (Reliance rental)
- Sump pump

- EXTERIOR -

REAR

- Fully fenced
- Framing perennial gardens
- Framing cedars
- Spacious portico with flagstone + build in audio
- Expansive stone patio for al fresco dining
- Pool house with concealed equipment
- Bar area with dedicated media + raised bar seating
- Linear inground pool framed with flat stone
- Pool-side stone lounge, perfect for lounging
- Flat grassy area
- Gas BBQ line
- Irrigation system

Luxury Features

FRONT

- Perimeter fencing
- Pristine landscaping
- Mature tree canopy
- Framing perennial gardens
- Stone framed driveway
- Stone walk-way leads to portico
- Irrigation system

INCLUSIONS

- Garage door opener with remote(s)
- All electronic light fixtures
- All drapery and window coverings
- TV mounts (if applicable)
- Kitchen:
- Jenn-air 6-burner gas cooktop
- Custom hood with stainless inset vent
- Panelled Jenn-air dishwasher
- Panelled Jenn-air fridge/freezer
- Built-in stainless Panasonic microwave
- Built-in stainless Jenn-air oven
- White front-loading Samsung washer + dryer pair
- Bar: stainless GE beverage fridge
- Central vacuum + attachments
- Salt-water pool installed 2018 + winter safety cover + robotic pool cleaner
- New heater 2025
- Ring doorbell
- Alarm system (monitoring to be arranged by buyer)
- Exterior security cameras

RENTALS

- Rheem hot water heater

EXCLUSIONS

- Freezer in storage
- Fridge in garage
- All TVs
- All personal pictures/art/décor indoor & out

*Notwithstanding any items identified as features or inclusions or exclusions in this brochure, only those items identified as inclusions in the Agreement of Purchase and sale will be deemed an inclusion.



GoodaleMillerTeam
CENTURY 21 MILLER REAL ESTATE LTD. BROKERAGE

905.338.2121 | GoodaleMillerTeam.com